



# médipréma

NEONATAL AND PAEDIATRIC TRANSPORT

## Transport **structures**

Go further, safer

**Médipréma** has been developing a unique know-how in designing and manufacturing polyvalent, autonomous and ergonomic transport structures to transfer newborns in a very safe environment. Médipréma can offer to users **turnkey transport solutions** as well as complete **custom-made transport solutions**. With its experimented research & Development team and its investments in innovation, Médipréma has become the **French leader of neonatal and paediatric emergency transport**.





# NEONATAL AND PAEDIATRIC TRANSPORT STRUCTURES

## médipréma

### AN EXTENSIVE EXPERIENCE & UNIQUE KNOW-HOW

#### • 20 YEARS OF EXPERIENCE:

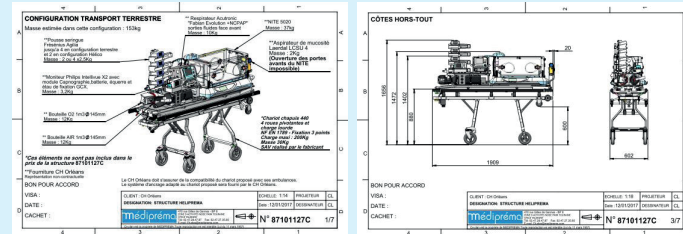
in designing and manufacturing neonatal and paediatric transport solutions. More than 40 helicopter structures and more than a hundred road structures have been put into service.

#### • A MULTIDISCIPLINARY DEVELOPMENT TEAM:

- 15 high qualified engineers and technicians spread over 1 mechanical design office and 1 electronic design office
- High knowledge of the medical field and specificities of emergency environment which allows Médipréma to propose safe and functional solutions.

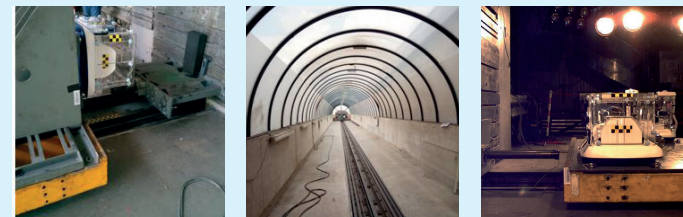
#### • AN APPROVED METHODOLOGY:

The design of a neonatal transport structure follows a precise process. All the solutions are 3D modelling to create a manufacturing plan based upon the specifications requested.

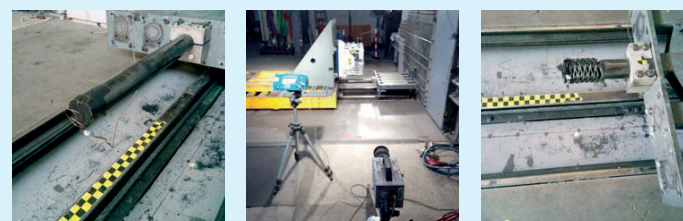


#### • TESTED SOLUTIONS:

Médipréma has several test rooms to validate its solutions. The company also works with a network of external laboratories. Nite transport incubator was put into a crash test in a Cofrac-connected laboratory allowing to claim an EN1789 10G certification.



Assembly of incubator on the crash test sled (direction Z+)



Impact tube calibrated for a 10 G deceleration for 70 ms

#### • CERTIFIED SOLUTIONS:

Médipréma Company meets the requirements of ISO 13485 quality system. Its system is regularly audited. The company has also an ISO 14001 certification, having wished to actively engage in the continuous improvement of its environmental performance. All our structures are validated by CE Mark. We offer to our customers complete structures validated by calculations 10G EN1789 and 20G DO160 resistances on the end-parts of the transport structures.

#### • FRENCH DESIGN AND MANUFACTURING:

Nite transport incubator and all Médipréma structures are designed and manufactured in Médipréma factory based in Loire Valley. This enables Médipréma to guarantee the quality and reliability of its devices by mastering the entire production chain.

### MEDIPREMA'S MISSION

is to find the best solution to answer your requirements, needs and budget in order to guarantee optimum neonates and infants transport conditions.

Whatever the solution adopted is (turnkey or complete custom made), we offer **a unique solution for baby warming therapy**, with our **Nite transport incubator**.

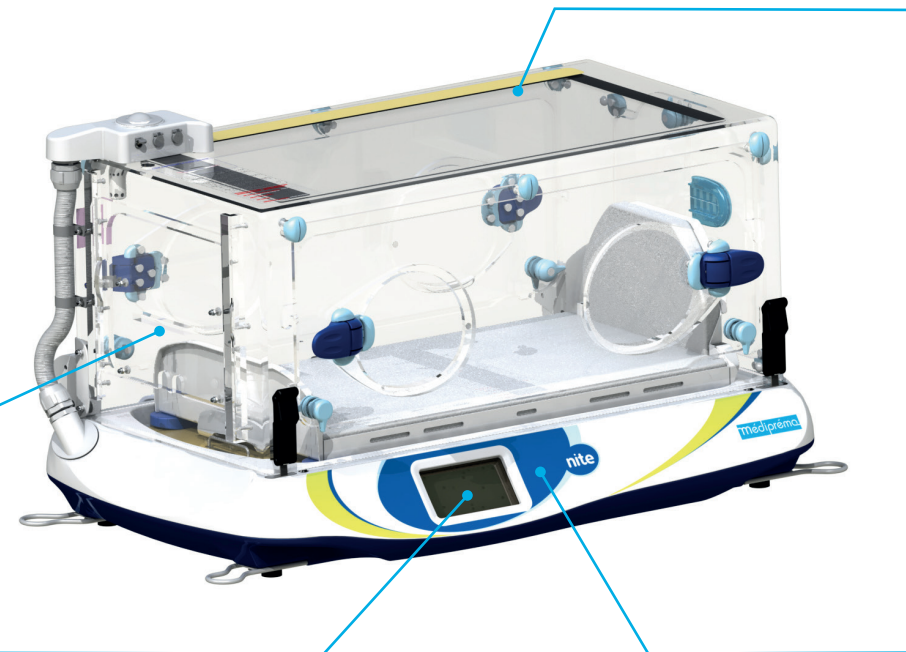
### KEY BENEFITS

4 side access for **high level ergonomics**.

5-sides visibility for **a perfect monitoring of the baby**.

**Intuitive touch screen control.**

**Both skin and air temperature regulation mode available.**



Best-in-class warming therapy via **radiant heating**.

**Immediate and efficient transfer of heat towards the newborn.**

**Perfect insulation from the unstable outside environment.**

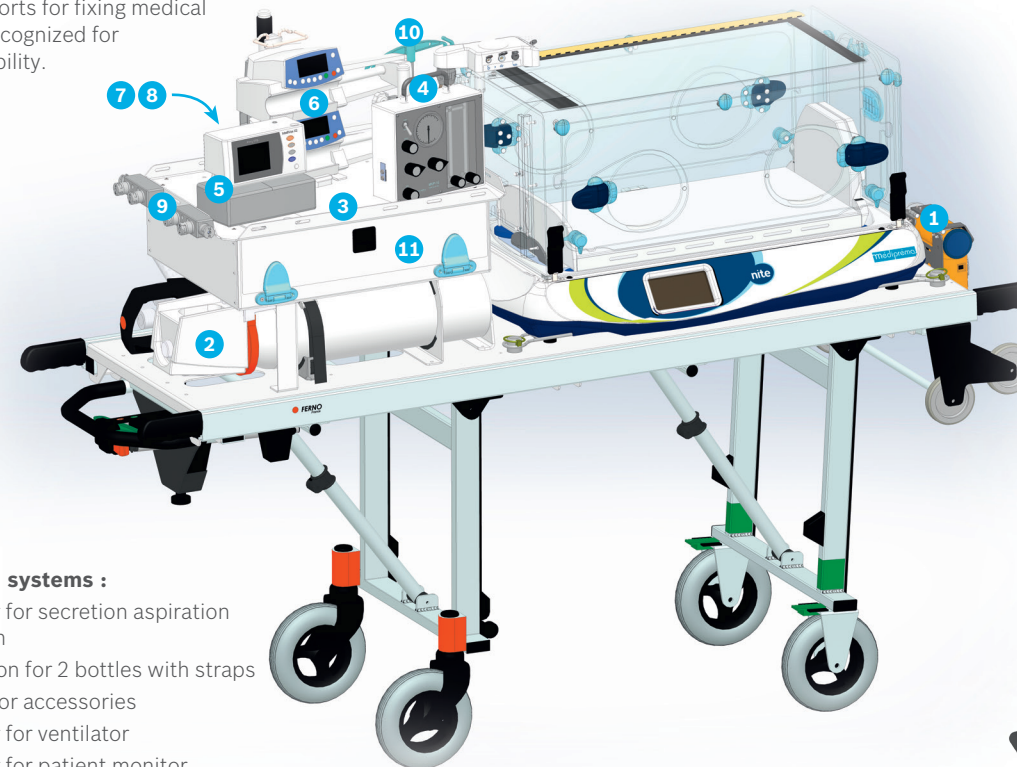
The **best technology in association with resuscitation bag** for an even better warming management.

**Silent (no fan) for maximum baby comfort.**

**Compact, light and rugged design.** Only 36kg of weight.

### MEDIPLANET : MEDIPREMA'S TURNKEY ROAD TRANSPORT SOLUTION

Médipréma offers a turnkey transport solution, with a structure fixed on a Ferno trolley and equipped with supports for fixing medical devices recognized for their reliability.



#### On-board systems :

- 1 Holder for secretion aspiration system
- 2 Location for 2 bottles with straps
- 3 Shelf for accessories
- 4 Holder for ventilator
- 5 Holder for patient monitor
- 6 Location for syringe pumps
- 7 Holder for NiMH battery (not pictured)
- 8 Location for electric sockets
- 9 Air or O2 bloc
- 10 Holder for TPS
- 11 Storage box

### MEDICRUISER / HELIPREMA : CUSTOMIZED TRANSPORT SOLUTIONS

Médipréma also offers the possibility to **build a complete custom-made unit, depending on customers' requirements**:

- **Kind of transport:** internal transfer, road transport, by helicopter, by plane, mixed transport (interoperability between several modes of transport), etc.
- **Constraints depending on the kind of transport:** weight, volume, peripheral equipments taken on board, power supply and gas autonomy etc.
- **Working habits:** organization around the baby, equipments taken on board, backpack using, weight, ergonomics of work etc.
- **Budget** available for the project .

Structure especially **designed for Airbus EC 135 helicopter** : fixed on RTS Chapuis trolley for ground transport.

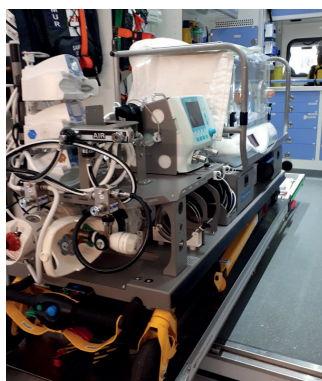
- Structure entirely **made of aluminum** (3x lighter than steel). **Less than 90kg** for this complete structure equipped with 1 Nite transport incubator, 1 Stephan EVE ventilator (with compressor for air supply), 1 Philips X3 monitor, 2 Fresenius Agilia infusion pumps, 1 external battery, and 2 gaz cylinders of 1m³.
- For aerostretchers which need to be disconnected from the dedicated trolley to fit into the aircraft, the safety straps enable to secure the stretcher on whatever trolley is available on the drop zone.
- Optimal solution for the specific requirements of air transport (very limited space and load) with interoperability.
- CE marked, **EN 1789 10G and DO 160 20G certification**.





## MEDIPREMA'S WARRANTIES

- **Compact, light and rugged design** validated by CE marking. After sometimes more than 15 years of intensive use in the harsh conditions of an emergency transport service, our structures are still in use.
- **Reliability and safety:** Each medical device is securely attached to the assembly while remaining easy to remove in response to emergency transport requirements. Médipréma's designs comply with European regulatory requirements for the marketing of medical devices.
- **Flexibility:** possibility to adapt multiple kind of devices with dedicated mounts on the mobile transport unit. Transport incubator quickly removable to also enable the care of older childs.



Brochure and photographs non contractual, may be modified without notice/ May 2019

médipréma

Zone d'Activités Node Park Touraine  
470, rue Gilles de Gennes - BP 8 - Zone d'Activités Node Park Touraine  
37310 Tauxigny - France  
Tél + 33 (0)2 47 28 47 87 - Fax + 33 (0)2 47 27 35 85 - [www.mediprema.com](http://www.mediprema.com)

